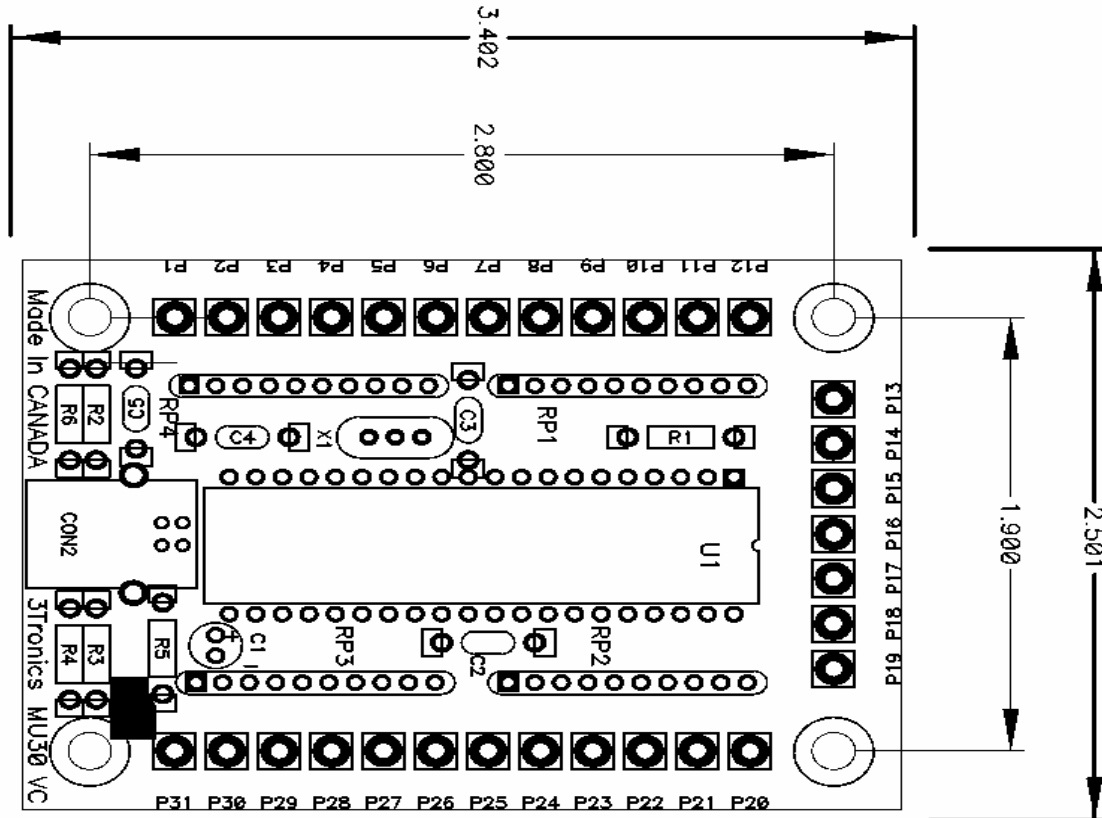


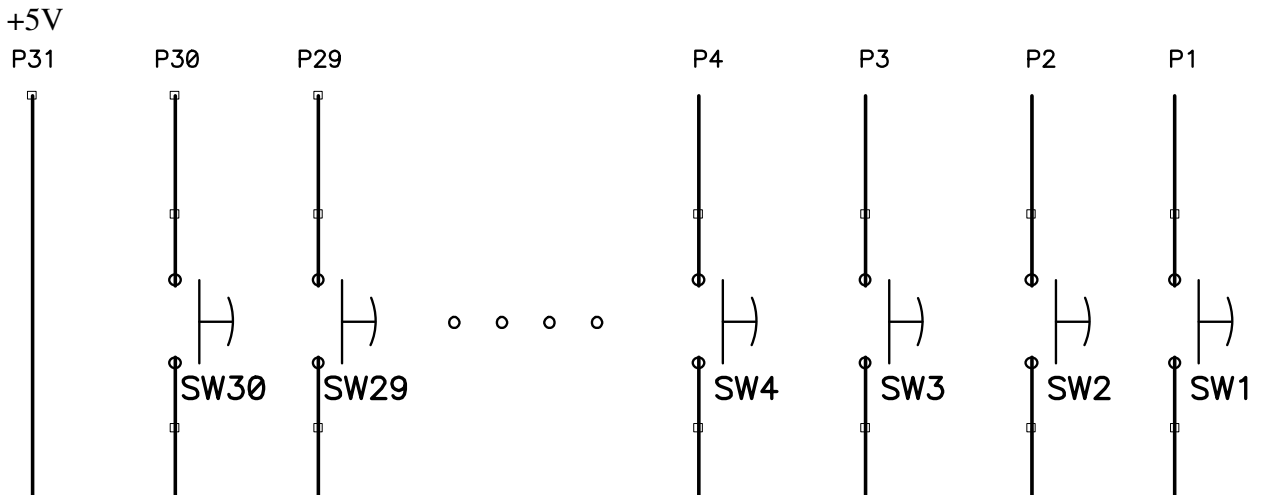
MAMI 30 input USB Keyboard Emulators

Board and connections:



P1 – P30 : 30 CMOS Active high switch inputs. 0V=off,5V=on (send scancode)
 P31 : Common +5V DC for switches.

Switch circuit



DEFAULT MAPPING

PLAYER1		Device	Key
P1	RIGHT	Joystick1	R arrow
P2	LEFT	Joystick1	L arrow
P2	UP	Joystick1	U arrow
P4	DOWN	Joystick1	D arrow
P5	SW1	Switch	L-ctrl
P6	SW2	Switch	L-alt
P7	SW3	Switch	space
P8	SW4	Switch	L-shift
P9	SW5	Switch	Z
P10	SW6	Switch	X
P11	SW7	Switch	C
P12	SW8	Switch	V
P13	SW9	Switch	B
P14	SW10	Switch	N
PLAYER2			
P15	RIGHT	Joystick2	G
P16	LEFT	Joystick2	D
P17	UP	Joystick2	R
P18	DOWN	Joystick2	F
P19	SW1	Switch	A
P20	SW2	Switch	S
P21	SW3	Switch	Q
P22	SW4	Switch	W

CONTROL			
P23	SW5	Switch	Esc
P24	SW6	Switch	Enter
P25	SW7	Switch	Tab
P26	SW8	Switch	OK
P27	COIN 1	Switch	5
P28	COIN 2	Switch	6
P29	START 1	Switch	1
P30	START 2	Switch	2

Warning:

Be careful not to short out connections on bottom of board to ground. Always place the board on a non conducting surface. Shorting the connector pins to ground may blow a fuse on the motherboard supplying +5Volts, it's a real pain to fix.

Support , questions or suggestions:

3Tronics Technical Services
 Tel: 250 352 3131
 roland@3tronics.com